

STORM SURGE GUIDANCE BASED ON 0600 UTC OF 16TH MAY

Tidal wave above astronomical tide is likely to inundate coastal areas as per details below:
about 3 m over Junagarh, 1-2.5 m over Diu, Gir Somnath, Amreli, Bharuch, Bhavnagar, Ahmedabad, Anand, Surat and about 0.5 -1m over Devbhoomi Dwarka , Jamnagar, Porbandar, Kutch the remaining coastal districts of Gujarat during the time of landfall.(Details given in Annexure-I).

Storm Surge Guidance based on INCOIS Bulletin

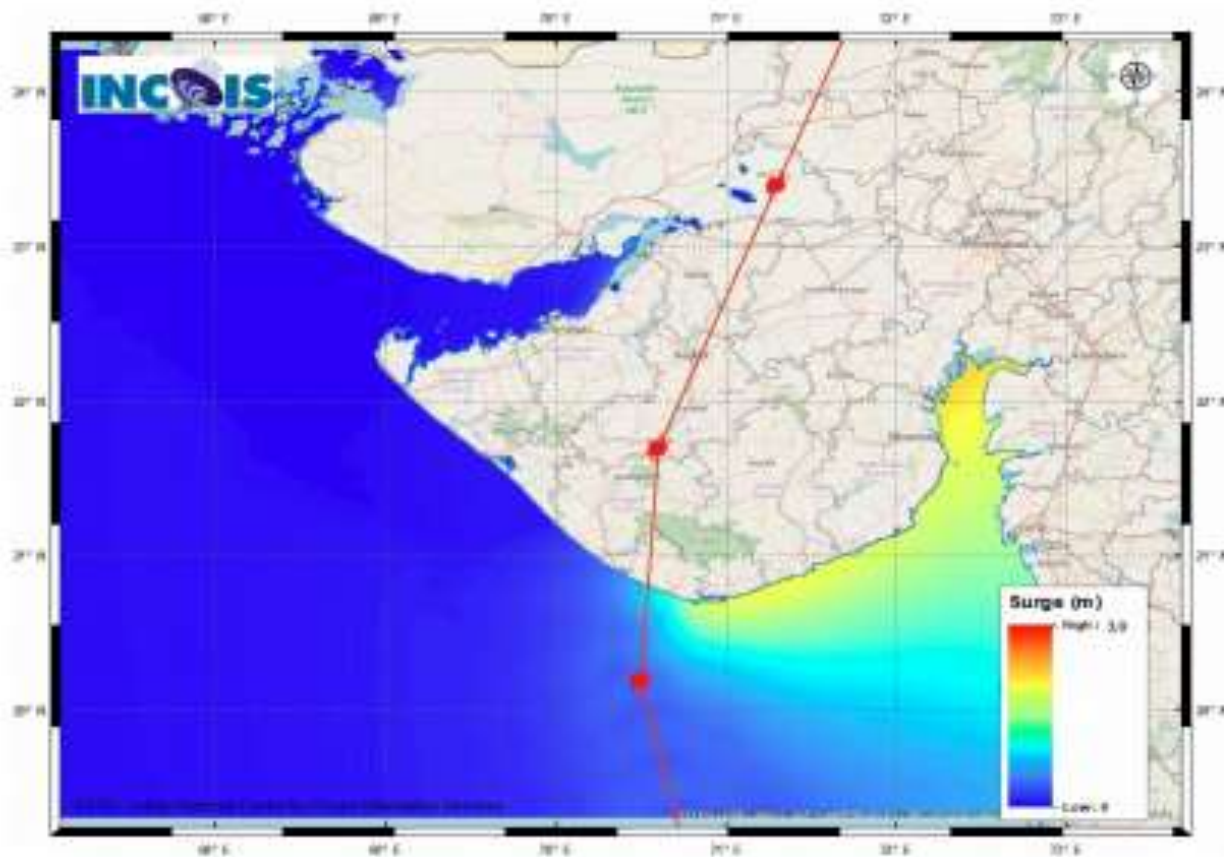


Figure:Storm Surge Map

STORM SURGE HEIGHT INFORMATION:

* The below listed surge heights are over and above astronomical tide.

MANDAL/TALUK	DISTRICT	STATE / UNION TERRITORY	NEAREST PLACE OF HABITATION	STORM SURGE (m) *	EXPECTED INUNDATION EXTENT (km)
Una	Junagadh	Gujarat	Una	1.4-3.0	Upto 0.9
Kodinar	Gir Somnath	Gujarat	Kodinar	1.3-2.4	Upto 0.4
Kodinar	Gir Somnath	Gujarat	Kodinar	1.3-2.4	Upto 0.4
Kharobhat	Anand	Gujarat	Akhol	0.8-2.3	Upto 1.2
Khambhat	Anand	Gujarat	Akhol	0.8-2.3	Upto 1.2
Dhandhuka	Ahmadabad	Gujarat	Mitli	0.6-2.3	Upto 2.1
Diu	Diu	Daman and Diu	Diu	1.1-2.3	Upto 0.7
Rajula	Amreli	Gujarat	Patva	0.6-2.2	Upto 0.3
Jambusar	Bharuch	Gujarat	Devla	1.1-2.2	Upto 2.2
Jafarabad	Amreli	Gujarat	Rohisa	2.0-2.1	Upto 0.1
Mahuva	Bhavnagar	Gujarat	Mahuva	1.7-2.0	Upto 0.1
Mahuva	Bhavnagar	Gujarat	Mahuva	1.7-2.0	Upto 0.1
Alibag	Raigarh	Maharashtra	Ranjankhar Divali	0.3-0.7	Upto 1.9
Bharuch	Bharuch	Gujarat	Manad	1.6-1.8	Upto 0.1
Bhavnagar	Bhavnagar	Gujarat	Narbad	1.2-2.2	Upto 2.4
Bombay	Mumbai City	Maharashtra	Greater Bombay	0.6-0.8	Nil
Borsad	Anand	Gujarat	Tithor	1.6-1.6	Upto 0.3
Chorasi	Surat	Gujarat	Bhingsor	1.2-1.5	Upto 0.5
Dahanu	Palghar	Maharashtra	Narpad	0.2-1.0	Upto 1.0
Daman	Daman	Daman and Diu	Daman	0.8-1.1	Nil
Gandevi	Navsari	Gujarat	Mendhar	1.1-1.3	Upto 1.2
Greater Bombay	Mumbai Suburban	Maharashtra	Greater Bombay	0.7-0.8	Upto 1.6
Hansot Mahal	Bharuch	Gujarat	Kantivajal	1.0-1.8	Upto 0.9
Hazira	Surat	Gujarat	Hazira Ina (ma)	0.9-1.7	Upto 1.0
Jamnagar	Jamnagar	Gujarat	Jamnagar	0.3-0.3	Nil
Jodiya	Jamnagar	Gujarat	Navlaksi	0.2-0.4	Upto 0.1
Maliya	Junagadh	Gujarat	Vadodra Dodiya	0.4-0.4	Upto 0.1
Mangson	Raigarh	Maharashtra	Water Body	0.5-0.5	Upto 0.1
Mangrol	Junagadh	Gujarat	Khambhaliya	0.2-0.3	Upto 0.1
Morbi	Kachchh	Gujarat	Navlaksi	0.2-0.4	Upto 1.0
Mundra	Bhavnagar	Gujarat	Vadgam	1.7-1.7	Upto 0.6
Murud	Raigarh	Maharashtra	Water Body	0.5-0.6	Upto 0.2
Navsari	Navsari	Gujarat	Borsi	0.7-1.5	Upto 0.4